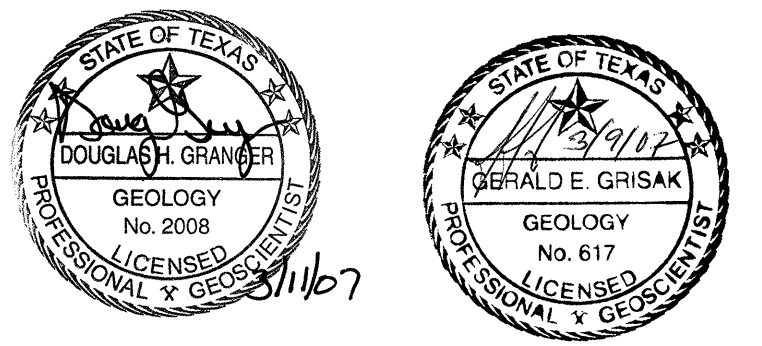
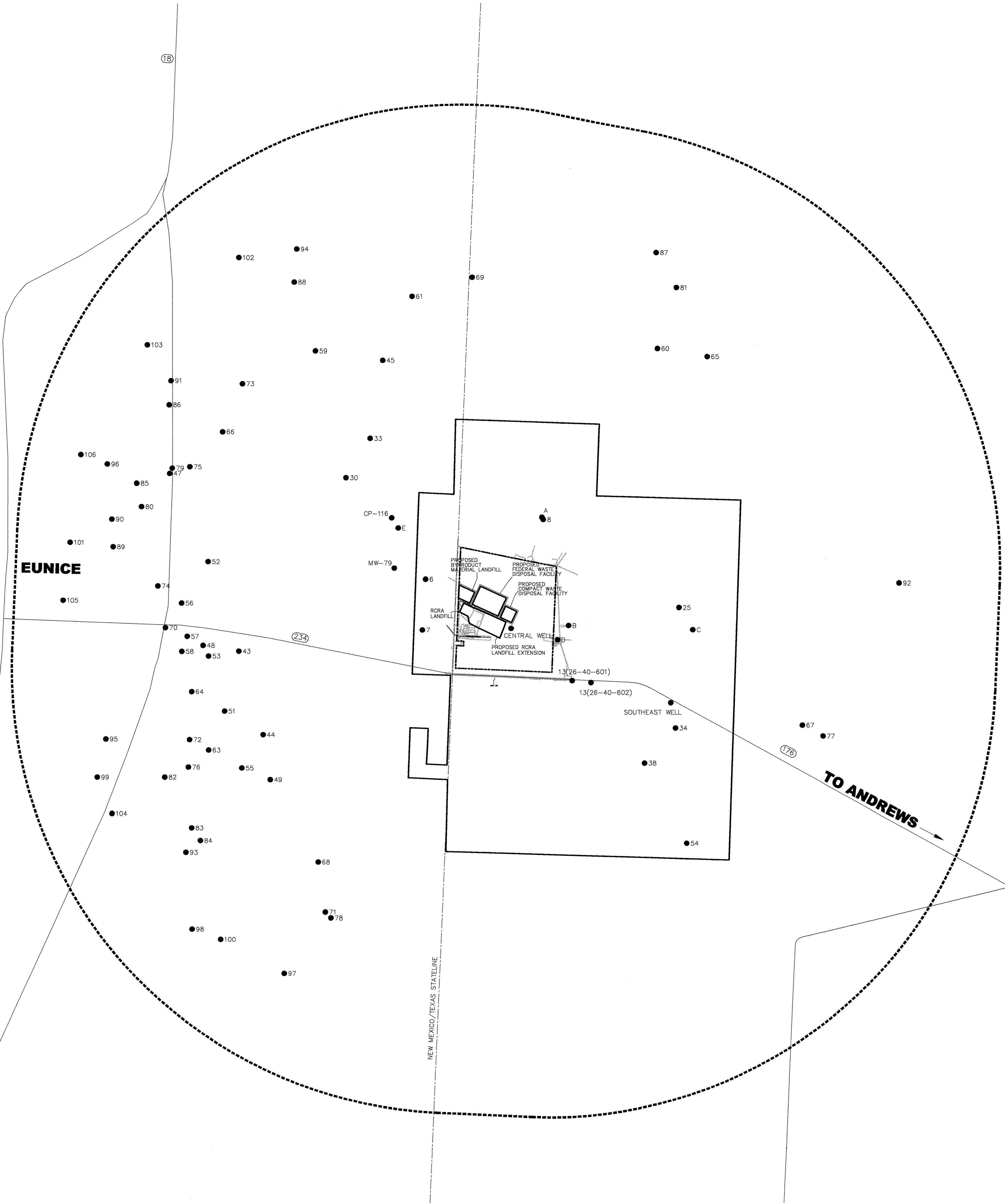


- LEGEND**
- WCS FACILITIES AREA BOUNDARY
 - WCS SITE BOUNDARY
 - 10-KILOMETER RADIUS
 - WATER WELL



NOTE:
 WATER WELL LOCATIONS PROVIDED BY BANKS INFORMATION SOLUTIONS, INC. IN REPORT DATED 16 NOVEMBER 2005. ADDITIONAL WATER WELLS A-E LOCATED IN FIELD BY CJI PERSONNEL USING GPS UNIT.

BASE MAP SOURCE:
 TEXAS NATURAL RESOURCE INFORMATION SYSTEM (TNRI) DIGITAL DATA
 TEXAS DEPARTMENT OF TRANSPORTATION (TXDOT)
 ANDREWS COUNTY, TEXAS SPRING 2003

REV.	DATE	DESCRIPTION	DR BY	APP BY
4	3/07	CHANGED FIGURE NUMBER AND ADDED LANDFILL AND DISPOSAL FACILITIES	RB	GEG
3	11/05	REMOVED OIL/GAS WELLS AND CHANGED BASE MAP	SDB	DHG
2	10/04	CHANGED TEXT AND SITE BOUNDARIES ADDED	SDB	DHG
1	10/04	SITE BOUNDARIES ADDED	SDB	DHG

INTERA INCORPORATED
 9111A Research Blvd.
 Austin, TX 78758

COOK-JOYCE INC
 ENGINEERING AND CONSULTING
 812 WEST ELEVENTH AUSTIN, TEXAS 78701
 512-474-9097

PROJECT:
 WASTE CONTROL SPECIALISTS LLC
 ANDREWS COUNTY, TEXAS

SHEET TITLE:
 WATER WELLS WITHIN A 10-KILOMETER RADIUS OF THE LANDFILL SITE

DES BY	---	---	SCALE: SEE BAR SCALE
DR BY	SDB	SDB	PROJECT NO. 03047.05
CHK BY	DHG	DHG	CJI NO. 03047130R12a
APP BY	DHG	DHG	SHEETS 1 OF 1 SHEETS
DATE ISSUED: 02-09-2004	FIGURE NO.		
FILE: WCS_Fig6-1.dwg	6-1		